

Case Study: Pike Tree Canopy Analysis

Rachel Aine, Livy Crim, Jessie Menefee, Mariya Trenkinshu • Indiana University • SPEA-E 422

Characteristics of Pike:

- Population of 77,895.
- Home to business headquarters.
- UTC ranging from 10% to 59%.

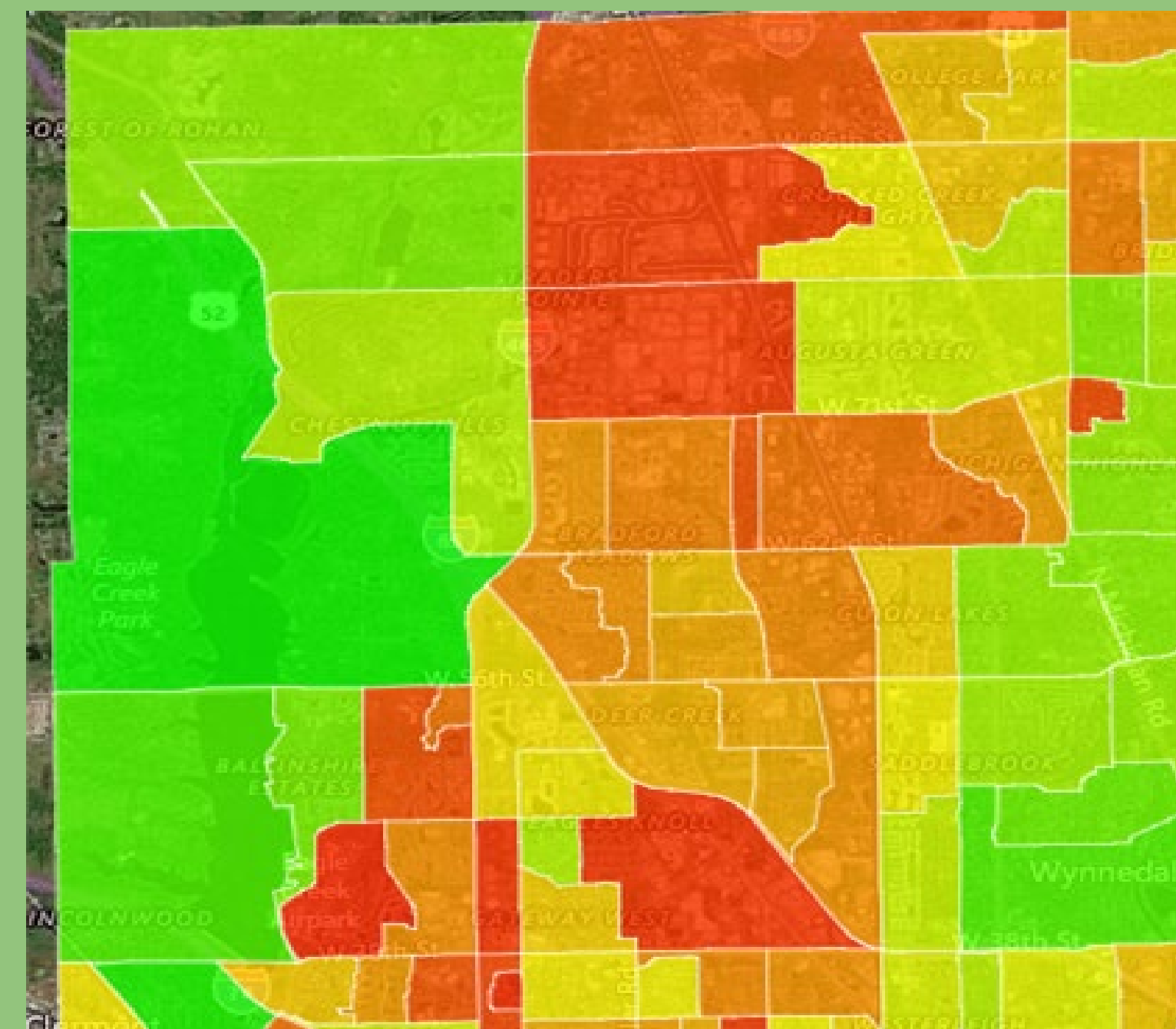


Fig 1. Low existing tree canopy

Most Important Factors:

- Possible UTC
- Low existing tree canopy
- Stormwater reduction

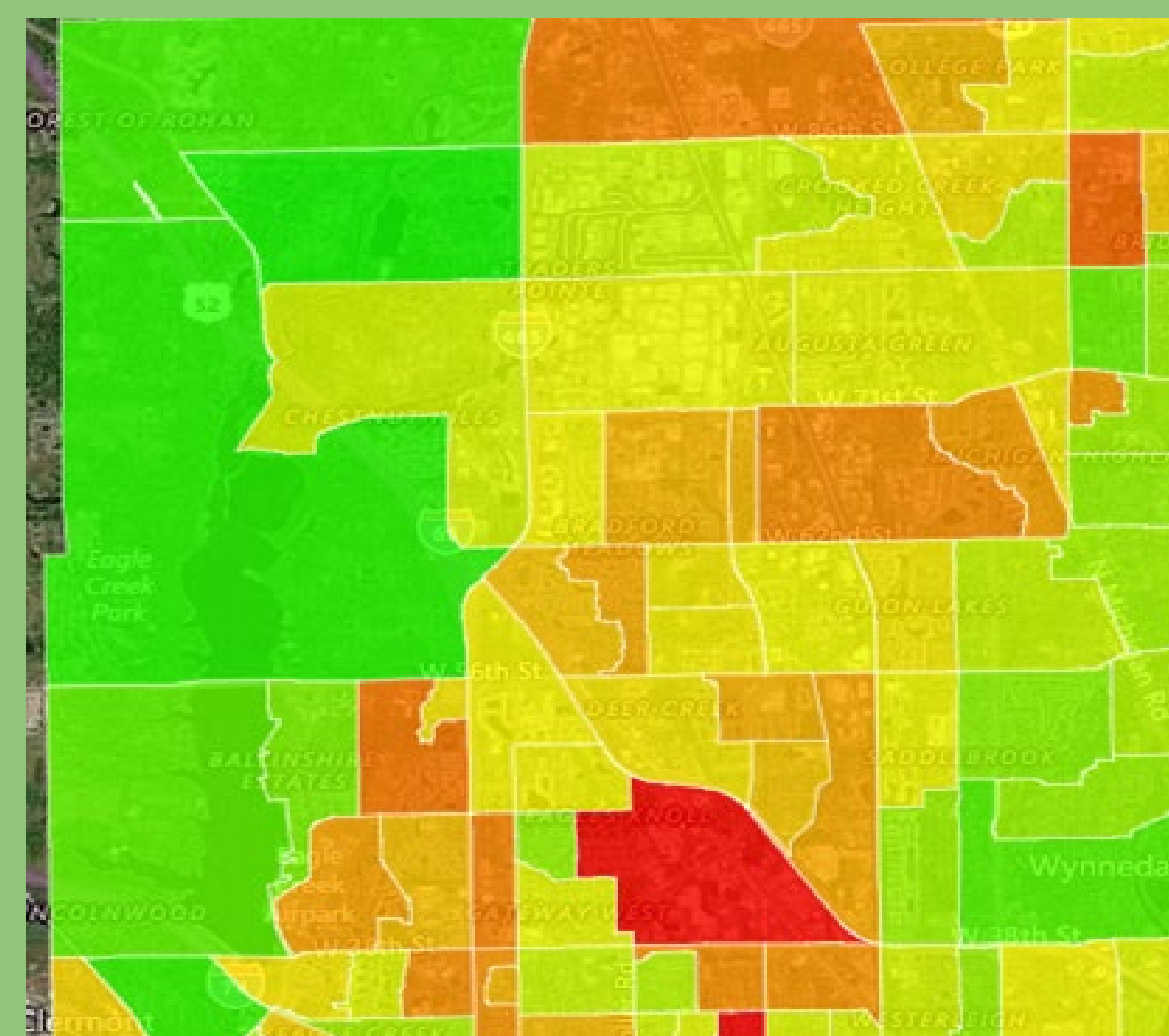


Fig 2. Possible UTC

Target Neighborhoods for tree planting:

- Park 100
- Lafayette Square

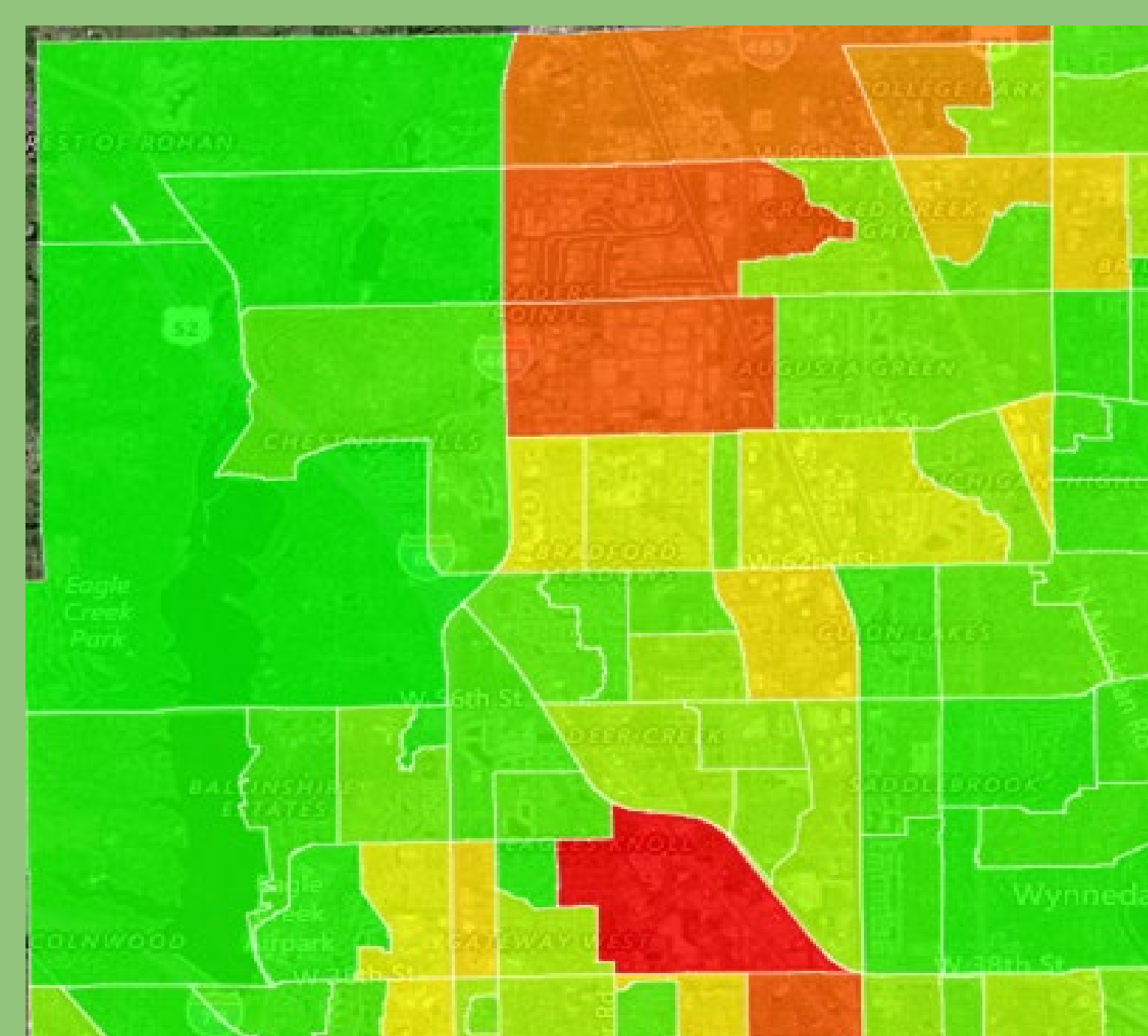


Fig 3. Storm water reduction

Strategies to increase interest in trees:

- Stormwater and flooding costs
- Economic benefits

Sources of funding:

- Encourage businesses to sponsor individual tree plantings
- Host fundraising events with businesses

Potential for Improvement:

- Introduction Page
- Layering of Outlines
- Table of context on Tree Canopy Report

References:

"Metropolitan School District of Pike Township." *About Us*. N.p., n.d. Web. 17 Apr. 2017.

"Pike Township, Marion County, Indiana." *Wikipedia*. Wikimedia Foundation, 06 Apr. 2017. Web. 17 Apr. 2017.

Tree Canopy Planner. Keep Indianapolis Beautiful, n.d. Web. 17 Apr. 2017.

Wolf, K.L. 1999. Nature and commerce: human ecology in business districts. In Kollin, C., ed. *Building Cities of Green: Proceedings of the 1999 National Urban Forest Conference*. Washington, DC: American Forests: 56-59.

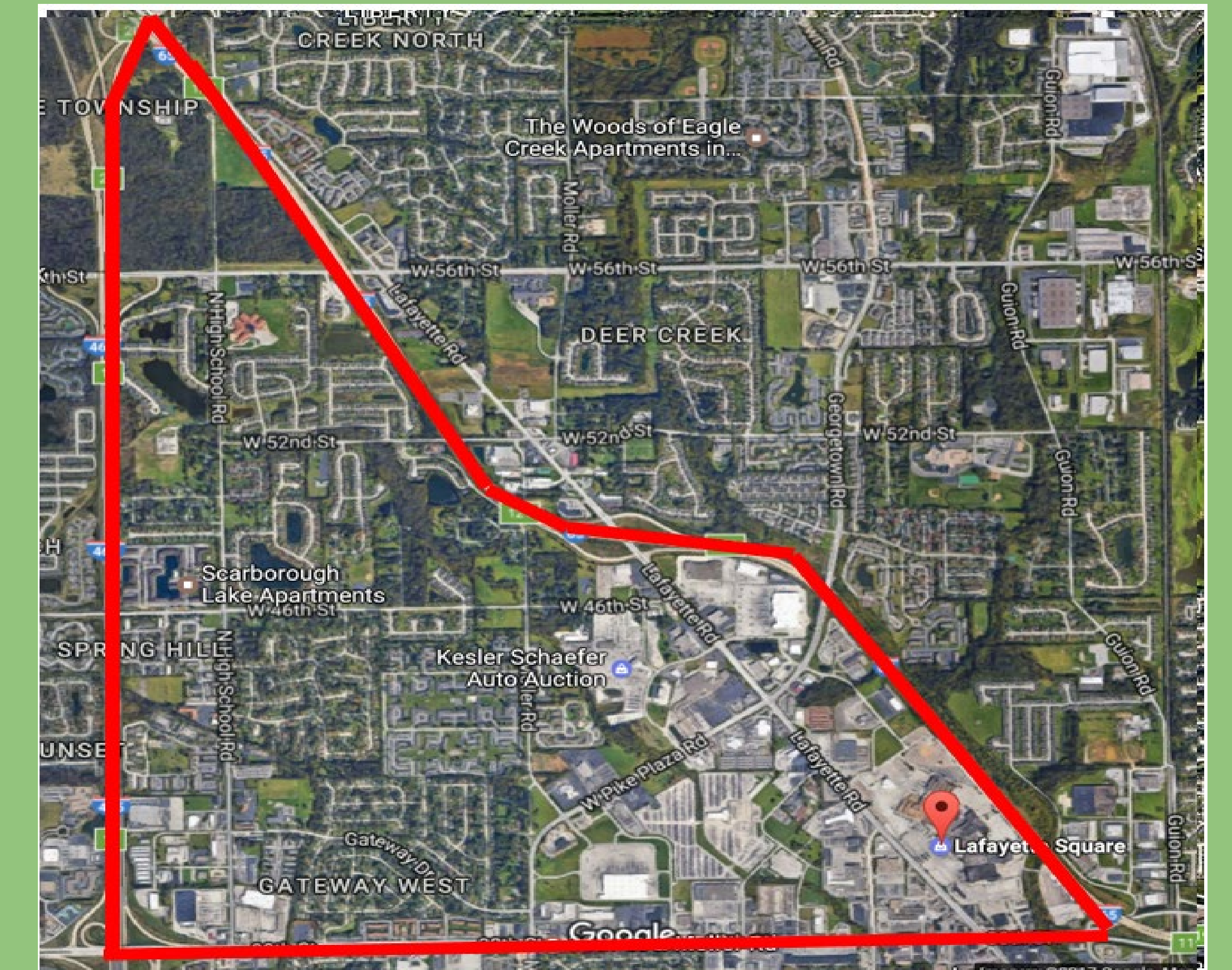


Fig 4. Lafayette Square neighborhood.



Fig 5. Park 100 neighborhood.