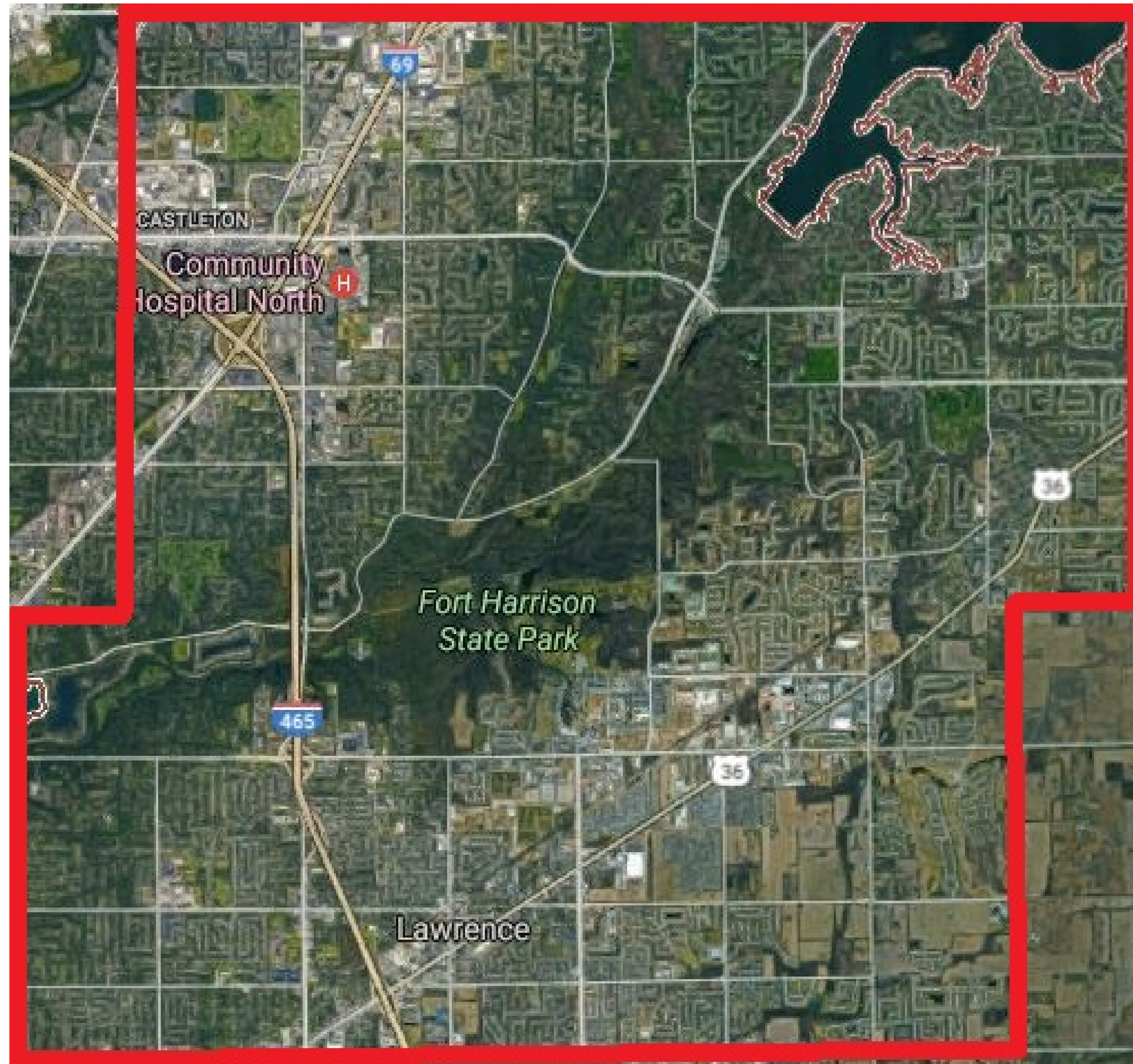


Urban Forestry Planning for Lawrence Township, IN

By Kiefer Ramey, Justin Kay, Heath Donley, Taylor Wissel SPEA-E422 Spring 2017 Indiana University

Lawrence Township



Provided by: Google Maps

KIB Report Layers

Keep Indianapolis Beautiful Report lays out several different factors that need to be addressed. However the priority of these factors for Lawrence township can be viewed below.

Highest priority

- Water Quality
- Energy Savings
- Low Economic Vitality
- Low Existing Tree Canopy
- Possible UTC

Lowest Priority

- Vulnerable Populations
- Stormwater Reduction
- Urban Heat Island Mitigation
- Air Quality
- Public Realm Assets

Recommendations

Tree Canopy planner

Issue: Practicality is uncertain.

Increase features aimed at individual homeowners such as showing benefits from single tree plantings at their own home (similar to the National Tree Benefits Calculator).

Tree Canopy Report

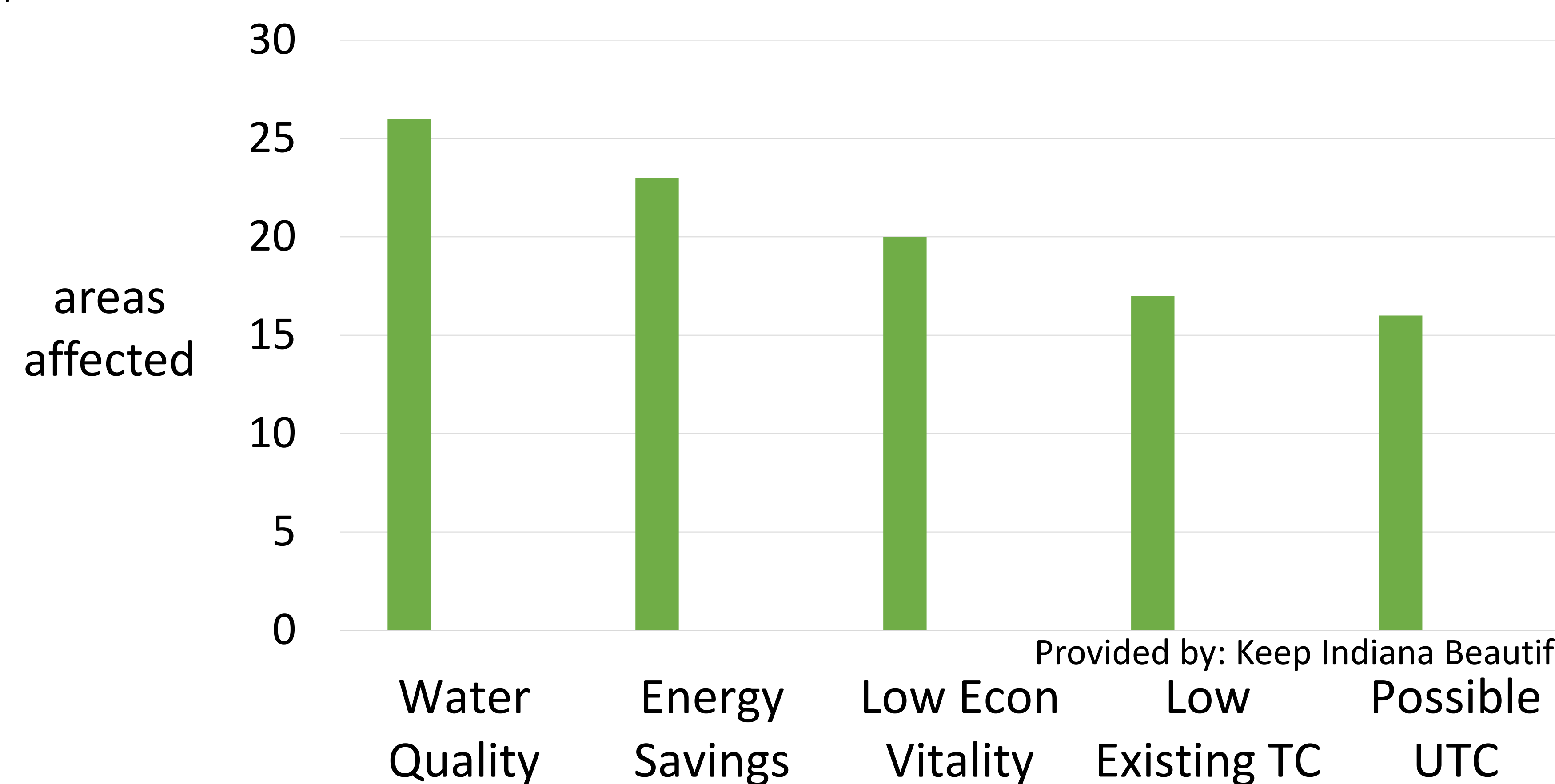
Issue: Too Broad

Create tree canopy reports for the townships within IMC. That way townships can create their own tree canopy goals in efforts to meet IMC's collective tree canopy goals.

The Tree Canopy Planner

- Great for visualization of information
- Important tool when developing new projects
- Can save resources (time, money)
- Helpful for teaching others
- Can be utilized by NOAs & HOAs
- Features not designed for individual use (homeowner level)

Highest Priority Factors in Lawrence



Provided by: Keep Indiana Beautiful

The above graph represents the number of blocks affected by the highest priority factors. These factors are a combination of low economic flow through the community. Which results in slower project turnarounds and less trees being maintained/planted.

Conclusion

Lawrence township has a relatively high percentage of tree canopy cover, consisting of 40% canopy cover and only 10% impervious surface cover. Increasing tree canopy coverage in Lawrence township will rely on the help of KIB with community planting efforts and educating citizens on the benefits of trees. Overall, KIB offers great public resources such as the Tree Canopy Planner and Tree Canopy Report for assessing tree canopy data.