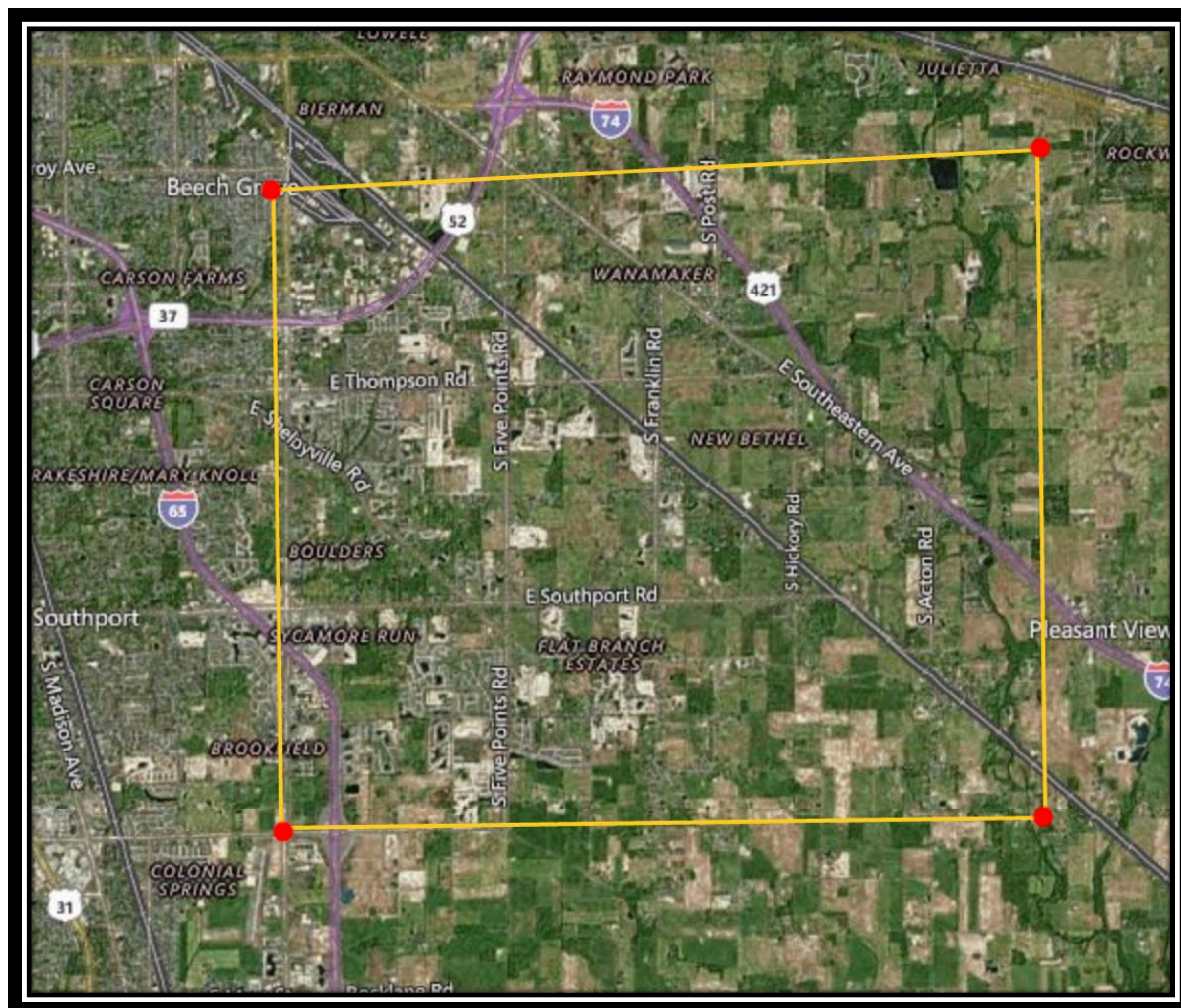


Franklin County Case Study

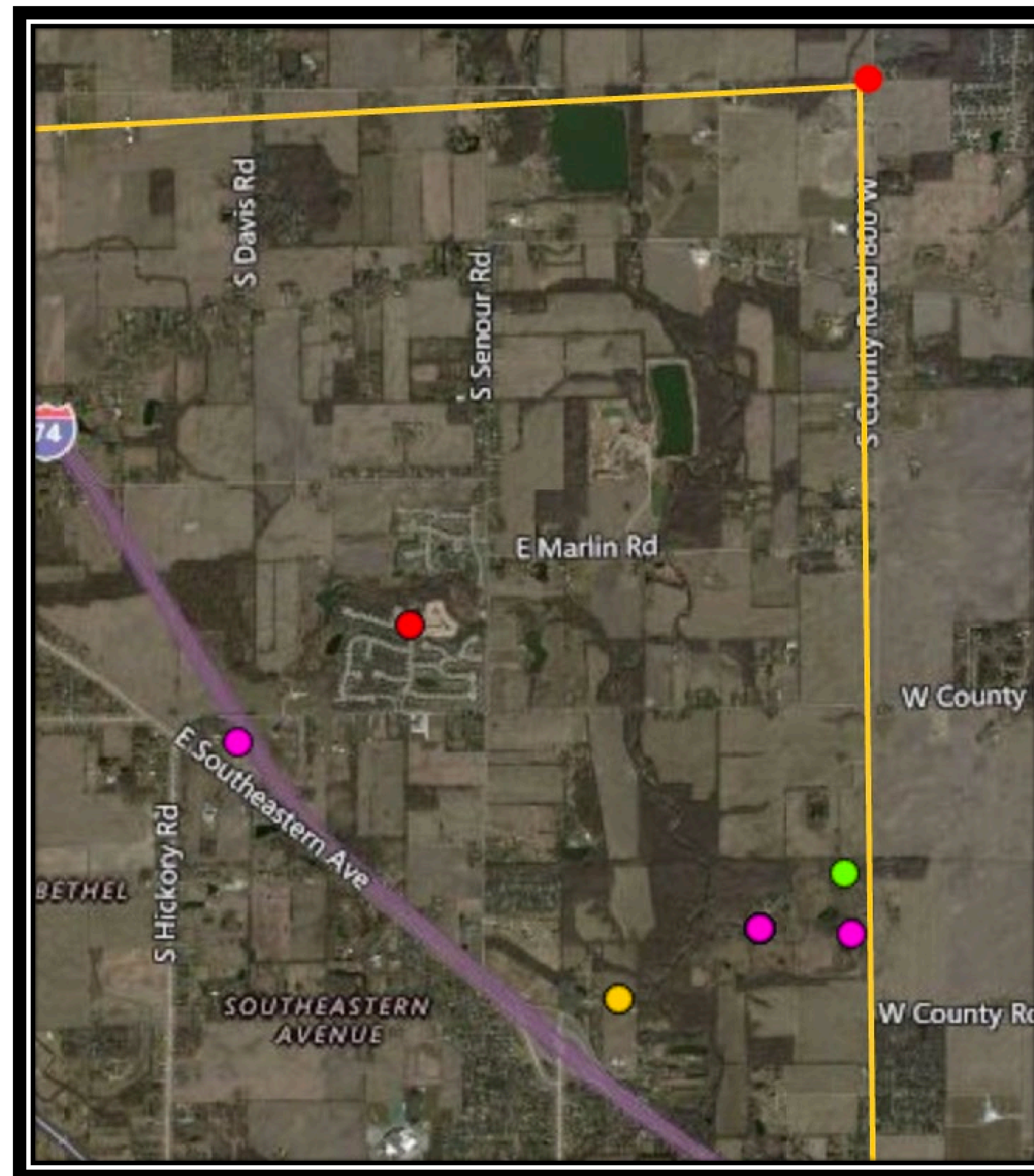
Anne Maunsell, Ben Thornton, Courtney Zunica
 School of Public and Environmental Affairs, Indiana University, E422 Fall 2017

Ranking of Data Layers

1. Total Amounts of Urban Tree canopy for Different County Locations (Towns, Parks, Watersheds, Neighborhoods, and Block Groups),
2. Possible Planting Area Vegetation
3. Possible Planting Area Impervious
4. Species Diversity
5. Amount of Trees
6. When trees were planted
7. Trees' Watering Plan
8. Tree Health
9. Labeling trees by their Partner organization or Project/Maintenance Plan



View of Franklin County



Area most in need of protection



Area most in need of tree planting

Recommendations for KIB

- Individualized report for each county, with recommendations for where they could improve
- Give full access to community leadership
- Create a project involving the TCP that high schools could participate in

Recommendations for Indianapolis Tree Canopy Report

- Engage citizens to partake in fundraising
 - Have a donation page or envelope included with report
 - Highlight years past successful events
 - Competition between schools
- Further conversation about tree canopy within the community
 - Organizing town meetings or a public forum
 - Discuss community member's ideas
 - Sponsor an education program in schools, lecture series, or community service hours
 - Youth tree planting day where participants would get to miss an afternoon of classes